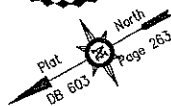
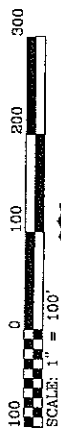


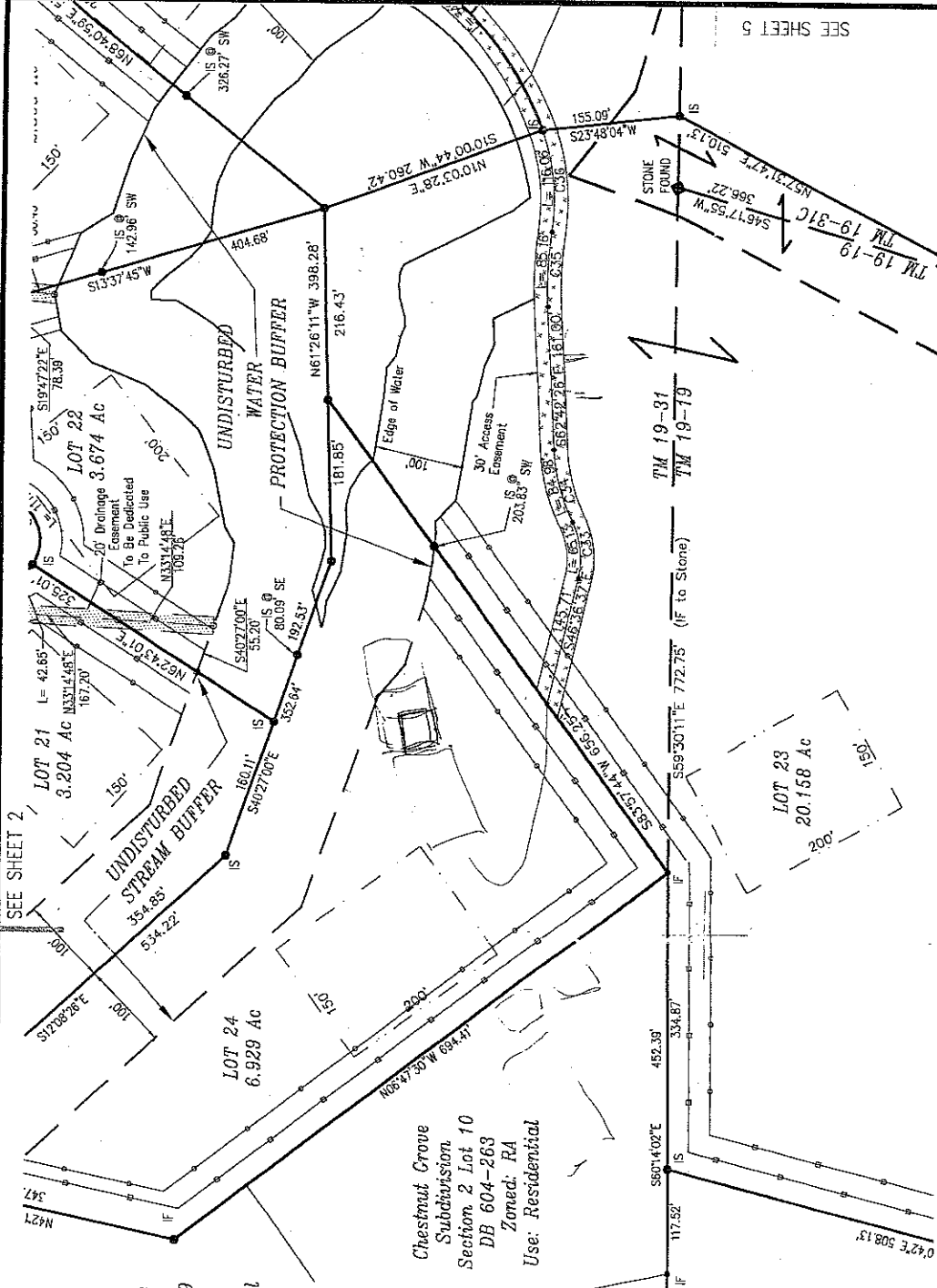
PLAT SHOWING SUBDIVISION OF  
 TAX MAP 19 PARCELS 18, 19, 31, and 31C  
**TANAGER WOODS RURAL  
 PRESERVATION DEVELOPMENT**  
 WHITE HALL DISTRICT, ALBERMARLE COUNTY, VIRGINIA  
 SHEET 4 of 7  
 DATE: SEPTEMBER 15, 2001  
 REV. NOVEMBER 6, 2001  
 REV. DECEMBER 27, 2001  
 REV. FEBRUARY 5, 2002  
 REV. MARCH 31, 2002



Chestnut Grove  
 Subdivision  
 Section 2 Lot 9  
 DB 604-263  
 Zoned: RA  
 Use: Residential

Chestnut Grove  
 Subdivision  
 Section 2 Lot 10  
 DB 604-263  
 Zoned: RA  
 Use: Residential

Chestnut Grove Subdivision  
 Section 2 Lot 11  
 DB 604-263  
 Zoned: RA  
 Use: Residential



SEE SHEET 5

SEE SHEET 2

S1°38'E 541.94'

S60°13'26"E 452.52'

S60°14'02"E

S59°30'11"E 772.75' (IF to Stone)

S59°30'11"E 772.75'

S59°30'11"E 772.75'

S59°30'11"E 772.75'

S59°30'11"E 772.75'

S59°30'11"E 772.75'

S59°30'11"E 772.75'

S59°30'11"E 772.75'

S59°30'11"E 772.75'

S59°30'11"E 772.75'

S59°30'11"E 772.75'

S59°30'11"E 772.75'