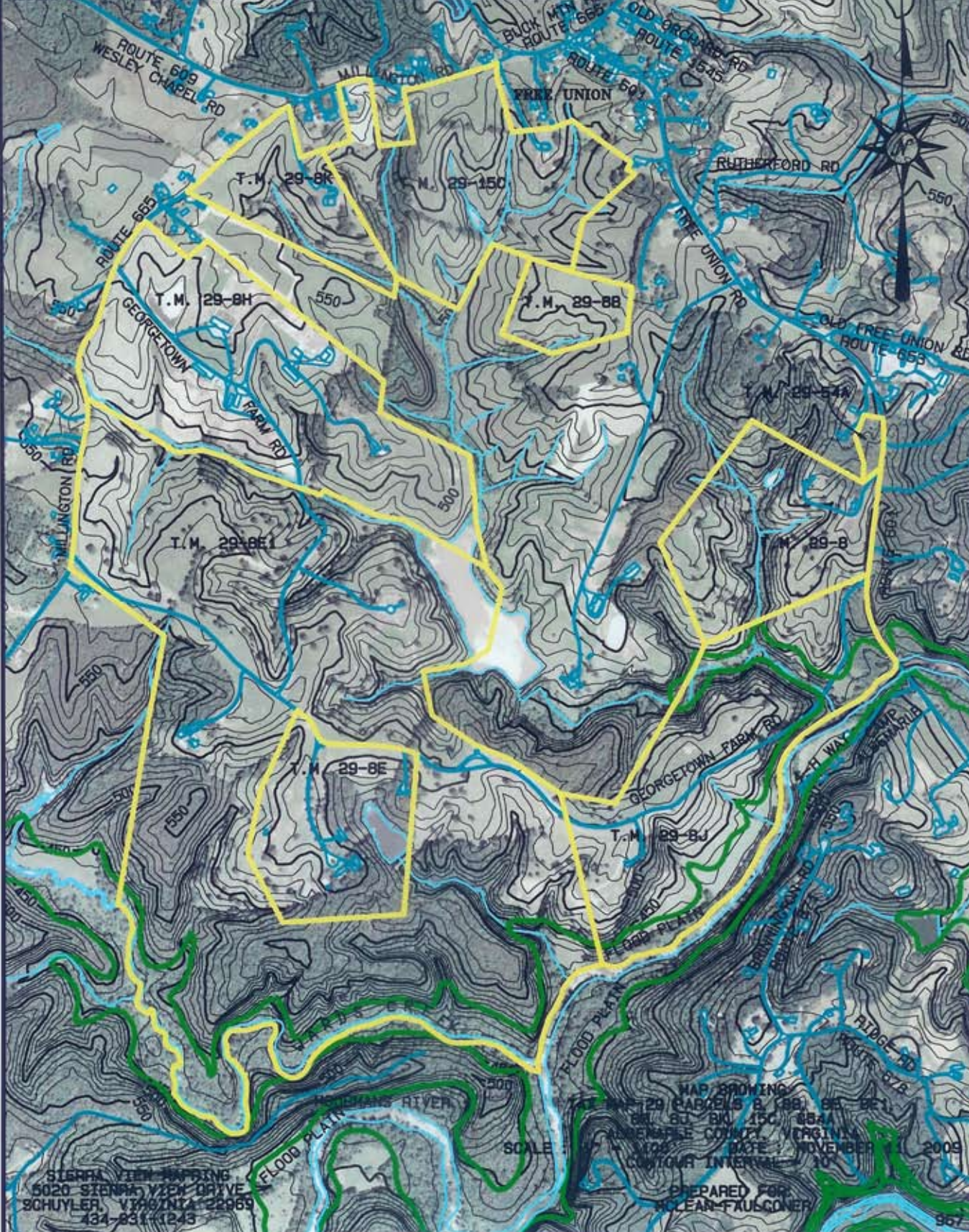


TOPOGRAPHIC DATA SHOWN HEREON WAS OBTAINED FROM THE ALBEMARLE COUNTY YEAR 2000 DIGITAL ORTHOPHOTOGRAPHY. IMAGES WERE TAKEN IN 2003. PROPERTY LINES SHOWN HEREON WERE TAKEN FROM THE ALBEMARLE COUNTY 2007 DIGITAL TAX MAPS AND ARE APPROXIMATE. NO WARRANTY IS PROVIDED FOR THE ACCURACY OF THE PROPERTY LINES OR OTHER DATA SHOWN HEREON.



SIERRA VIEW MAPPING  
5020 SIERRA VIEW DRIVE  
SCHUYLER, VIRGINIA 22969  
434-831-1243

MAP SHOWING  
T.M. 29-8K, 29-150, 29-8H, 29-8B, 29-8E, 29-8F, 29-8J, 29-8A, 29-8C, 29-8D, 29-8G, 29-8I, 29-8L, 29-8M, 29-8N, 29-8O, 29-8P, 29-8Q, 29-8R, 29-8S, 29-8T, 29-8U, 29-8V, 29-8W, 29-8X, 29-8Y, 29-8Z, 29-8AA, 29-8AB, 29-8AC, 29-8AD, 29-8AE, 29-8AF, 29-8AG, 29-8AH, 29-8AI, 29-8AJ, 29-8AK, 29-8AL, 29-8AM, 29-8AN, 29-8AO, 29-8AP, 29-8AQ, 29-8AR, 29-8AS, 29-8AT, 29-8AU, 29-8AV, 29-8AW, 29-8AX, 29-8AY, 29-8AZ, 29-8BA, 29-8BB, 29-8BC, 29-8BD, 29-8BE, 29-8BF, 29-8BG, 29-8BH, 29-8BI, 29-8BJ, 29-8BK, 29-8BL, 29-8BM, 29-8BN, 29-8BO, 29-8BP, 29-8BQ, 29-8BR, 29-8BS, 29-8BT, 29-8BU, 29-8BV, 29-8BW, 29-8BX, 29-8BY, 29-8BZ, 29-8CA, 29-8CB, 29-8CC, 29-8CD, 29-8CE, 29-8CF, 29-8CG, 29-8CH, 29-8CI, 29-8CJ, 29-8CK, 29-8CL, 29-8CM, 29-8CN, 29-8CO, 29-8CP, 29-8CQ, 29-8CR, 29-8CS, 29-8CT, 29-8CU, 29-8CV, 29-8CW, 29-8CX, 29-8CY, 29-8CZ, 29-8DA, 29-8DB, 29-8DC, 29-8DD, 29-8DE, 29-8DF, 29-8DG, 29-8DH, 29-8DI, 29-8DJ, 29-8DK, 29-8DL, 29-8DM, 29-8DN, 29-8DO, 29-8DP, 29-8DQ, 29-8DR, 29-8DS, 29-8DT, 29-8DU, 29-8DV, 29-8DW, 29-8DX, 29-8DY, 29-8DZ, 29-8EA, 29-8EB, 29-8EC, 29-8ED, 29-8EE, 29-8EF, 29-8EG, 29-8EH, 29-8EI, 29-8EJ, 29-8EK, 29-8EL, 29-8EM, 29-8EN, 29-8EO, 29-8EP, 29-8EQ, 29-8ER, 29-8ES, 29-8ET, 29-8EU, 29-8EV, 29-8EW, 29-8EX, 29-8EY, 29-8EZ, 29-8FA, 29-8FB, 29-8FC, 29-8FD, 29-8FE, 29-8FF, 29-8FG, 29-8FH, 29-8FI, 29-8FJ, 29-8FK, 29-8FL, 29-8FM, 29-8FN, 29-8FO, 29-8FP, 29-8FQ, 29-8FR, 29-8FS, 29-8FT, 29-8FU, 29-8FV, 29-8FW, 29-8FX, 29-8FY, 29-8FZ, 29-8GA, 29-8GB, 29-8GC, 29-8GD, 29-8GE, 29-8GF, 29-8GG, 29-8GH, 29-8GI, 29-8GJ, 29-8GK, 29-8GL, 29-8GM, 29-8GN, 29-8GO, 29-8GP, 29-8GQ, 29-8GR, 29-8GS, 29-8GT, 29-8GU, 29-8GV, 29-8GW, 29-8GX, 29-8GY, 29-8GZ, 29-8HA, 29-8HB, 29-8HC, 29-8HD, 29-8HE, 29-8HF, 29-8HG, 29-8HH, 29-8HI, 29-8HJ, 29-8HK, 29-8HL, 29-8HM, 29-8HN, 29-8HO, 29-8HP, 29-8HQ, 29-8HR, 29-8HS, 29-8HT, 29-8HU, 29-8HV, 29-8HW, 29-8HX, 29-8HY, 29-8HZ, 29-8IA, 29-8IB, 29-8IC, 29-8ID, 29-8IE, 29-8IF, 29-8IG, 29-8IH, 29-8II, 29-8IJ, 29-8IK, 29-8IL, 29-8IM, 29-8IN, 29-8IO, 29-8IP, 29-8IQ, 29-8IR, 29-8IS, 29-8IT, 29-8IU, 29-8IV, 29-8IW, 29-8IX, 29-8IY, 29-8IZ, 29-8JA, 29-8JB, 29-8JC, 29-8JD, 29-8JE, 29-8JF, 29-8JG, 29-8JH, 29-8JI, 29-8JJ, 29-8JK, 29-8JL, 29-8JM, 29-8JN, 29-8JO, 29-8JP, 29-8JQ, 29-8JR, 29-8JS, 29-8JT, 29-8JU, 29-8JV, 29-8JW, 29-8JX, 29-8JY, 29-8JZ, 29-8KA, 29-8KB, 29-8KC, 29-8KD, 29-8KE, 29-8KF, 29-8KG, 29-8KH, 29-8KI, 29-8KJ, 29-8KK, 29-8KL, 29-8KM, 29-8KN, 29-8KO, 29-8KP, 29-8KQ, 29-8KR, 29-8KS, 29-8KT, 29-8KU, 29-8KV, 29-8KW, 29-8KX, 29-8KY, 29-8KZ, 29-8LA, 29-8LB, 29-8LC, 29-8LD, 29-8LE, 29-8LF, 29-8LG, 29-8LH, 29-8LI, 29-8LJ, 29-8LK, 29-8LL, 29-8LM, 29-8LN, 29-8LO, 29-8LP, 29-8LQ, 29-8LR, 29-8LS, 29-8LT, 29-8LU, 29-8LV, 29-8LW, 29-8LX, 29-8LY, 29-8LZ, 29-8MA, 29-8MB, 29-8MC, 29-8MD, 29-8ME, 29-8MF, 29-8MG, 29-8MH, 29-8MI, 29-8MJ, 29-8MK, 29-8ML, 29-8MM, 29-8MN, 29-8MO, 29-8MP, 29-8MQ, 29-8MR, 29-8MS, 29-8MT, 29-8MU, 29-8MV, 29-8MW, 29-8MX, 29-8MY, 29-8MZ, 29-8NA, 29-8NB, 29-8NC, 29-8ND, 29-8NE, 29-8NF, 29-8NG, 29-8NH, 29-8NI, 29-8NJ, 29-8NK, 29-8NL, 29-8NM, 29-8NN, 29-8NO, 29-8NP, 29-8NQ, 29-8NR, 29-8NS, 29-8NT, 29-8NU, 29-8NV, 29-8NW, 29-8NX, 29-8NY, 29-8NZ, 29-8OA, 29-8OB, 29-8OC, 29-8OD, 29-8OE, 29-8OF, 29-8OG, 29-8OH, 29-8OI, 29-8OJ, 29-8OK, 29-8OL, 29-8OM, 29-8ON, 29-8OO, 29-8OP, 29-8OQ, 29-8OR, 29-8OS, 29-8OT, 29-8OU, 29-8OV, 29-8OW, 29-8OX, 29-8OY, 29-8OZ, 29-8PA, 29-8PB, 29-8PC, 29-8PD, 29-8PE, 29-8PF, 29-8PG, 29-8PH, 29-8PI, 29-8PJ, 29-8PK, 29-8PL, 29-8PM, 29-8PN, 29-8PO, 29-8PP, 29-8PQ, 29-8PR, 29-8PS, 29-8PT, 29-8PU, 29-8PV, 29-8PW, 29-8PX, 29-8PY, 29-8PZ, 29-8QA, 29-8QB, 29-8QC, 29-8QD, 29-8QE, 29-8QF, 29-8QG, 29-8QH, 29-8QI, 29-8QJ, 29-8QK, 29-8QL, 29-8QM, 29-8QN, 29-8QO, 29-8QP, 29-8QQ, 29-8QR, 29-8QS, 29-8QT, 29-8QU, 29-8QV, 29-8QW, 29-8QX, 29-8QY, 29-8QZ, 29-8RA, 29-8RB, 29-8RC, 29-8RD, 29-8RE, 29-8RF, 29-8RG, 29-8RH, 29-8RI, 29-8RJ, 29-8RK, 29-8RL, 29-8RM, 29-8RN, 29-8RO, 29-8RP, 29-8RQ, 29-8RR, 29-8RS, 29-8RT, 29-8RU, 29-8RV, 29-8RW, 29-8RX, 29-8RY, 29-8RZ, 29-8SA, 29-8SB, 29-8SC, 29-8SD, 29-8SE, 29-8SF, 29-8SG, 29-8SH, 29-8SI, 29-8SJ, 29-8SK, 29-8SL, 29-8SM, 29-8SN, 29-8SO, 29-8SP, 29-8SQ, 29-8SR, 29-8SS, 29-8ST, 29-8SU, 29-8SV, 29-8SW, 29-8SX, 29-8SY, 29-8SZ, 29-8TA, 29-8TB, 29-8TC, 29-8TD, 29-8TE, 29-8TF, 29-8TG, 29-8TH, 29-8TI, 29-8TJ, 29-8TK, 29-8TL, 29-8TM, 29-8TN, 29-8TO, 29-8TP, 29-8TQ, 29-8TR, 29-8TS, 29-8TT, 29-8TU, 29-8TV, 29-8TW, 29-8TX, 29-8TY, 29-8TZ, 29-8UA, 29-8UB, 29-8UC, 29-8UD, 29-8UE, 29-8UF, 29-8UG, 29-8UH, 29-8UI, 29-8UJ, 29-8UK, 29-8UL, 29-8UM, 29-8UN, 29-8UO, 29-8UP, 29-8UQ, 29-8UR, 29-8US, 29-8UT, 29-8UU, 29-8UV, 29-8UW, 29-8UX, 29-8UY, 29-8UZ, 29-8VA, 29-8VB, 29-8VC, 29-8VD, 29-8VE, 29-8VF, 29-8VG, 29-8VH, 29-8VI, 29-8VJ, 29-8VK, 29-8VL, 29-8VM, 29-8VN, 29-8VO, 29-8VP, 29-8VQ, 29-8VR, 29-8VS, 29-8VT, 29-8VU, 29-8VV, 29-8VW, 29-8VX, 29-8VY, 29-8VZ, 29-8WA, 29-8WB, 29-8WC, 29-8WD, 29-8WE, 29-8WF, 29-8WG, 29-8WH, 29-8WI, 29-8WJ, 29-8WK, 29-8WL, 29-8WM, 29-8WN, 29-8WO, 29-8WP, 29-8WQ, 29-8WR, 29-8WS, 29-8WT, 29-8WU, 29-8WV, 29-8WW, 29-8WX, 29-8WY, 29-8WZ, 29-8XA, 29-8XB, 29-8XC, 29-8XD, 29-8XE, 29-8XF, 29-8XG, 29-8XH, 29-8XI, 29-8XJ, 29-8XK, 29-8XL, 29-8XM, 29-8XN, 29-8XO, 29-8XP, 29-8XQ, 29-8XR, 29-8XS, 29-8XT, 29-8XU, 29-8XV, 29-8XW, 29-8XX, 29-8XY, 29-8XZ, 29-8YA, 29-8YB, 29-8YC, 29-8YD, 29-8YE, 29-8YF, 29-8YG, 29-8YH, 29-8YI, 29-8YJ, 29-8YK, 29-8YL, 29-8YM, 29-8YN, 29-8YO, 29-8YP, 29-8YQ, 29-8YR, 29-8YS, 29-8YT, 29-8YU, 29-8YV, 29-8YW, 29-8YX, 29-8YY, 29-8YZ, 29-8ZA, 29-8ZB, 29-8ZC, 29-8ZD, 29-8ZE, 29-8ZF, 29-8ZG, 29-8ZH, 29-8ZI, 29-8ZJ, 29-8ZK, 29-8ZL, 29-8ZM, 29-8ZN, 29-8ZO, 29-8ZP, 29-8ZQ, 29-8ZR, 29-8ZS, 29-8ZT, 29-8ZU, 29-8ZV, 29-8ZW, 29-8ZX, 29-8ZY, 29-8ZZ

SCALE: 1" = 100'

MAP PREPARED FOR:  
CLEAN FAUSCHNER

NOVEMBER 2009